



Event Summary

Event: UCI CX MoVal Weekend 2017

Location: March Field Park [5600 6th St, Moreno Valley, CA 92551](#)

Date: Sat/Sun, Nov 18-19, 2017 **UCI Classification:** C2 / C2

Start Time/Depart: **Sat Nov 18th**, 10:00AM first race start. Last race ends 7:30PM (see detailed race schedule)
Sun Nov 19th, 8:00AM first race start. Last race ends 4:45PM (see detailed race schedule)

Main Contacts: Race Director: Dorothy Wong Dot@SoCalCross.org 626.622.2595
 Technical Director: Jeff Herring Jeff@SoCalCross.org 626.622.5585

Website: www.SoCalCross.org **Website Event Page:** www.SoCalCross.org/CXMoVal17

Registration: Register online at www.BikeReg.com/MoVal17

****RACE DAY registration is available and opens at 8AM Saturday and 6:30AM Sunday then closes 20 minutes before each race start, except UCI closes 1 hour before the first UCI race start.**

Race Parking: Enter Park at Riverside Drive to N Street. Follow Signs to Race Parking.

****Race VIP-Pro Team Parking/Set Up Packages Available Online at BikeReg.com.**

Anti Doping: All races are conducted under USA Cycling, UCI and USADA anti-doping regulations. Riders must check to see if they are required to submit to doping control. Doping Control will be located next to the Meadows Complex and include a private restroom facility and enclosed tent structure.

Host Hotel: Comfort Inn, 23330 Sunnymead Boulevard, Moreno Valley, CA 92553 [\(951\) 242-0699](tel:(951)242-0699)

Post Race Showers: There will be showers/changing rooms on site at the Community Center and at host hotel.

Race HQ-Media- Internet:

Race-Media Headquarters will be located in the Soccer Arena in enclosed tents. Wireless hotspot internet access will be provided. ** Media and Staff badges will be required to enter. Inquiries: dot@socalcross.org

Awards Stage: The awards Podium is located in the Park Ballfield across from the finish line and will take place after results are final following each race.

Post Event Press Conference: Interviews with the athletes will take place next to the awards podium immediately following each awards ceremony.

Emergency Hospital: **Riverside County Regional Medical Center**
 26520 Cactus Ave, Moreno Valley, CA 92555 [Phone: \(951\) 486-4000](tel:(951)486-4000)

UCI CX MoVal Weekend: March Field Park – Technical Guide

PART 1: Rules and Regulations

Regulations:

The race shall be held under the 2017 USAC/UCI regulations: notably, safety, starting order, course guidelines, and duration of events.

Participation:

Categories: The weekend event will include UCI Elite Women, UCI Elite Men, UCI U23 Men and UCI Junior Men 17-18 categories as well as USA Cycling categories as part of the SoCalCross Prestige Series and shall be organized in accordance with USAC and UCI regulations.

USA Cycling categories will include:

- Youth Boys and Girls calendar age 6-9
- Junior Men age 9-14
- Junior Women age 9-14
- Junior Men age 15-18
- Junior Women 15-18
- Men 35+A (CX1-5)
- Men 35+B (CX 3-5)
- Men 35+C (CX4-5)
- Men 45+A (CX1-5)
- Men 45+B (CX3-5)
- Men 55+ (CX1-5)
- Men 65+ (CX1-5)
- Women 35+ 45+ 55+ (CX1-5)
- Non-UCI Men A (CX1-5)
- Non-UCI Women A (CX1-5)
- Men B (CX3-5)
- Women B (CX3-5)
- Men C (CX4-5)
- Women C (CX4-5)
- Single Speed Men A (CX1-5)
- Single Speed Men B (CX3-5)
- Single Speed Men C (CX4-5)
- Single Speed Women (CX1-5)
- Collegiate Men (CX1-5)
- Collegiate Women (CX1-5)

**Racing Age: A rider's 2017-18 racing age, according to UCI. 5.1.001 The category to which the license-holder belongs on December 31, 2018 will be used for his participation in events for the whole season.*

Anti Doping:

All races are conducted under USA Cycling, UCI and USADA anti-doping regulations.

Riders must check to see if they are required to submit to doping control. Doping Control will be located next to Golden Grove and will include a private facility and enclosed tent structure.

Start Order & Staging Protocol:

USAC Start Order Based on Series Overall Rankings Top 10 riders/Category then by CrossResults.com then by Day of Reg order. Non-UCI Men/Women A (CX1-4) start based on Cross Results then by Day of Reg order.

UCI rule 5.1.043 – Elite: The start order will be determined by the order of latest published UCI cyclocross points classification from highest to lowest. Riders without UCI points will receive start position by drawing lots.

UCI CX MoVal Weekend: March Field Park – Technical Guide

PART 1: Rules and Regulations (cont'd)

Bike Washing Area:

Spray washing will be available within the pit area as needed. There will be auxiliary wash areas near the Pro and VIP Team Parking Lot at Facility building and at the Team Camp Baseball Field

Bike Pit Pass & Mechanic's Protocol:

Mechanics' pit passes for UCI Elite Men, Women, U23 and Junior Men 17-18 races will be issued at Registration/Packet Pick-up. **No other personnel will be allowed in the pit zone.

Awards Area:

UCI Riders finishing in the top 5: Elite Men, Elite Women, U23 Women, U23 Men and Junior Men 17-18, Junior Women 17-18 categories shall report IMMEDIATELY to the podium waiting area. Only riders and staff are allowed in the podium waiting area. NO EXCEPTIONS. Mechanics must post bikes in the "winner's rack" within 5 minutes of the finish. Mechanics are to stay with the bikes until after their rider's press conference.

First Aid-Medical:

The First Aid-Medical Station (10x20 tents with sidings) will be located near the finish line overlooking the course with (2) ELS certified EMTs and medical doctor on standby will be on site for the duration of the race day from course open to close.

An ambulance will be placed nearby the Medical Aid Station along the start/finish straight at Ballfield #2 which is located in the central part of the course.

Registration:

Pre-registration is available online at BikeReg.com or SoCalCross.org/register

Online registration ends Friday – November 17th at 12N Pacific. Race Day Registration will be available onsite for all USA Cycling Categories only. USAC race registration opens at 8:30 AM Saturday and 6:30AM Sunday then opens two hours before each race start and closes 20 minutes prior to each race wave start.

UCI category race day registration will be not allowed. All UCI registration MUST be done on-line by Friday November 17th by 12N. **UCI rider confirmation and race number pick-up closes one hour before the start of the first scheduled UCI race each day.

License Requirements: USAC licenses are required to participate. One-day licenses will be available for purchase for \$10 at race for non-UCI CX category 5. Annual USAC licenses are required for CX categories 1-4.

For UCI events Elite Men, Women and Juniors are required to hold a valid 2017 or 2018 UCI International License. 2017 USAC licenses will be sold on site valid through 12/31/17. 2017-18 licenses can be purchased for \$115 or \$55 for Juniors.

Participants cannot apply online before December 1st if they want their license valid through 2018. They must purchase using a paper application. Please notate at the top of the paper application to request license valid through 2018.

Race Membership⁽¹⁾ (includes race license of same type)

Adult Domestic	\$70
Junior Domestic (18 and younger on 12/31/2018)	\$35
Collegiate	\$45
International (excludes BMX)	\$200
International Junior (18 and younger on 12/31/2017 - excludes BMX)	\$100
International (for foreign riders - i.e. non-U.S. citizens)	\$200

UCI CX MoVal Weekend: March Field Park – Technical Guide

PART 1: Rules and Regulations (cont'd)

Pre-Reg/Online Entry Fees:

A \$5.00 race day per day fee will be added to those not pre-registering online. Additional races are \$5.00 after higher race price is paid. Weekend discount rate available with online registration.

Online Entry Fee by Race Category:

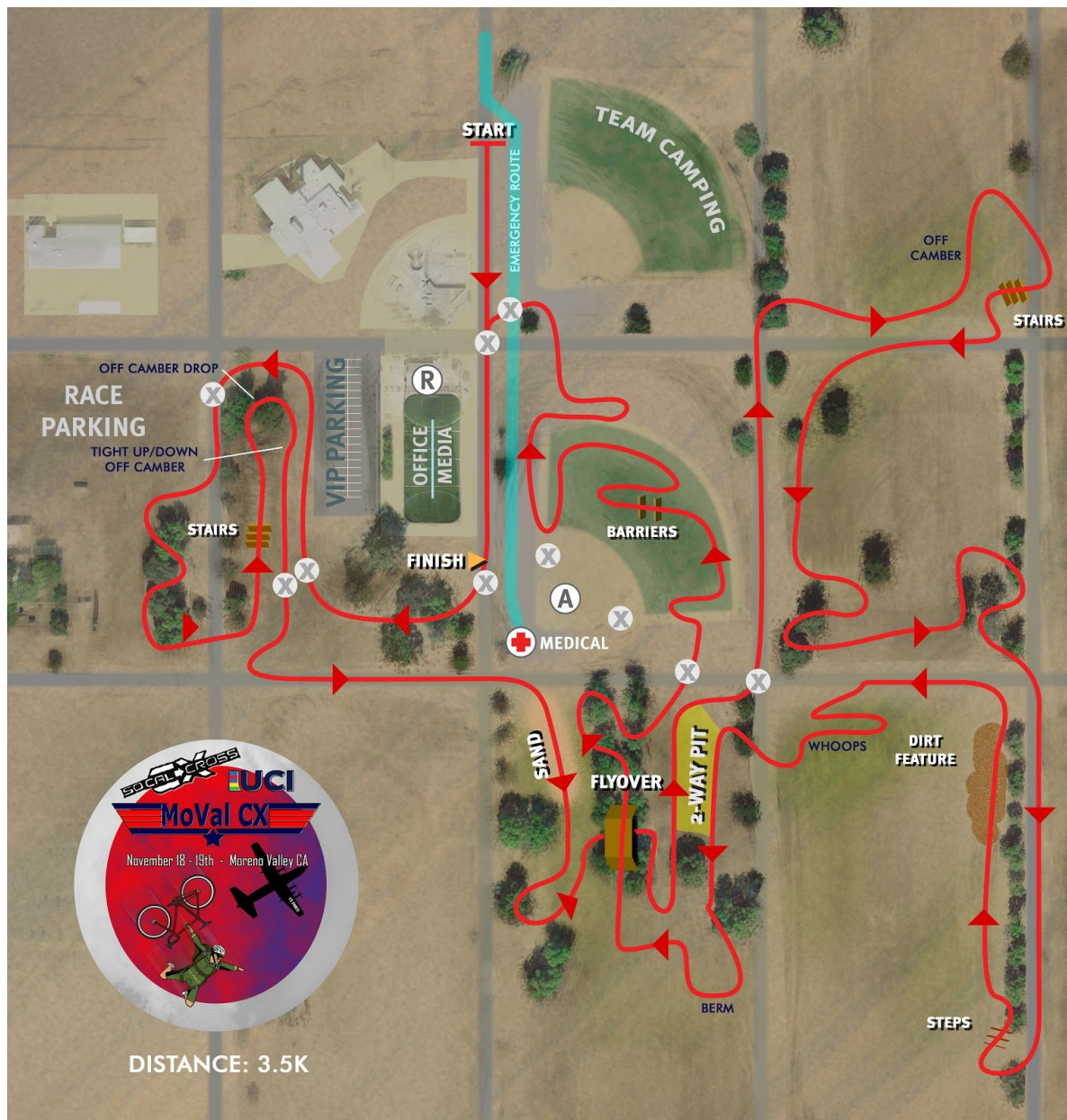
- UCI Elite Men \$55
- UCI Elite Women \$55
- UCI U23 Men \$45
- UCI Junior Men 17-18 \$40
- USAC Masters Men & Women (all ages) \$35 / \$30 Men Women C Beginner
- USAC Categories (Non-UCI, Single Speed) \$35
- USAC Collegiate \$15
- USAC Juniors \$15
- First Timer Race (one lap) \$10
- Youth Age 6-9 race (one lap) \$5

CX MOVAL VIP TEAM ZONES: Sign up online to reserve your space on course or Pro-VIP parking! Reserve online today! <https://www.bikereg.com/cxmoval-pro-vip>

***WEEKEND discount pre-register online by Friday 11/17 @12N at [BikeReg.com/CXMoVal17](https://www.bikereg.com/CXMoVal17)**

UCI CX MoVal Weekend: March Field Park – Technical Guide

PART 2: Venue - Course Design Description



COURSE DESCRIPTION:

This 3.5km punch flat fast course is a mix of asphalt and hard pack dirt roads intertwined with thick baseball field grass, lots of turns through loose lomi dirt from California Pepper and Oak Groves intermixed around the circuit. There will be one railroad tie run up hill, two stairs sections, one double-barrier section, one man-made sand pit, off-camber dirt hill and whoop section, and one crossover/under structure. There will be a double bike pit (2-way) location in the center of the course, splitting the midway points in each direction. It will include a bike wash station as needed for races in progress. Auxiliary wash stations will be located on each end of the north parking lot as needed.

THE COURSE IS OPEN FOR RIDER INSPECTION DURING THESE DAYS AND HOURS:

From 2PM-5PM on Friday (11/17), Saturday from 8AM-10AM, Sunday at 7AM-8AM before the first race. [RideCX](#) hosts a free beginner CX skills course preview one hour before race start each day. There will be UCI only course warm up at the conclusion of the USAC races at approximately **2:30pm Sat and 12:15pm Sunday for UCI categories**. The course will be open for preview between race waves and when directed by the race official. Make sure to arrive early enough to get ride time on the course before your race.

UCI CX MoVal Weekend: March Field Park – Technical Guide

PART 3: Park information and Directions

THE VENUE – March Field Park, Moreno Valley, CA:

5600 6th Street Moreno Valley, CA 92551

[Google Map HERE](#)

March Field Park is located in the City of Moreno Valley joint powers agreement with March Air Reserve Base. The Park is located at 5600 6th St., Moreno Valley, CA, .



March Field Park is located in the City of Moreno Valley and next to March Air Reserve Base. March is one of the oldest airfields operated by the United States military, being established as Alessandro Flying Training Field in February 1918. It was one of thirty-two Air Service training camps established after the United States entry into World War I. The park is open to the public from 7:00am to 10pm, 7 days a week.

Moreno Valley is in [Riverside County, California](#) and is part of the [San Bernardino-Riverside Metropolitan Area](#). A relatively young city, its rapid growth from the 1980s to the early 2000s made it the second-largest city in Riverside County by population, and one of the [Inland Empire's](#) population centers. As of the 2010 [census](#), the city's population was 193,365. The city is closely tied to [Riverside, California](#), the county seat and largest city in the county, which neighbors Moreno Valley directly to the west. Moreno Valley is also part of the [Greater Los Angeles area](#).

UCI CX MoVal Weekend: March Field Park – Technical Guide



LODGING: CX MoVal Host Hotel is the [Comfort Inn Moreno Valley](#) located just 3.5 miles north of the race venue. Reserve your room today. (951) 242-0699

Address:	23330 Sunnymead Blvd
City/State:	Moreno Valley, CA
Zip Code:	92553
Phone Number:	(951) 242-0699

RECOMMENDED HOTELS NEARBY: Hampton Inn - Moreno Valley, Best Western - Moreno Valley, LA Quinta Inn/Suites - Moreno Valley. Also, Riverside has a nice selection of hotels nearby.

CX MOVAL HAS RV & CAMPING: Sign up online to reserve your VIP RV spot (no hook ups) and Team CAMP space on course! Reserve online today! <https://www.bikereg.com/cxmoval-pro-vip>

FOOD/SHOPPING: Towngate has it all...

TownGate, a mixed use master planned community of 590 acres which encompasses low to medium density housing units, schools, parks, apartments, office space and retail services. Incorporated in 1984, Moreno Valley has twice been recognized as one of the fastest growing cities in the U.S. The shopping center also serves the city of Riverside and surrounding communities in Riverside County. The property is located adjacent to the Moreno Valley Mall.

TownGate Crossing is a prime community shopping center located along two of the heaviest traveled thoroughfares in Moreno Valley—Moreno Valley Freeway (US 60) and Canyon Springs Parkway. The retail and dining center is located on Day Street, the borderline between Moreno Valley and Riverside, the two largest cities in Riverside County.

UCI CX MoVal Weekend: March Field Park – Technical Guide



PART 4: UCI CX MoVal Weekend Event Schedule

11/15 - WEDNESDAY - COURSE SET UP DAY 1

- 7AM-5PM BUILD CROSS FLYOVER RAMP / DIRT FEATURE SECTIONS

11/16 THURSDAY – COURSE SET UP – DAY 1

- 7AM-5PM BUILD SAND SECTION, SET OFFICE, PRO TEAM - CAMPING AREAS

11/17 FRIDAY – COURSE SET UP – DAY 2

- 7AM-5PM INSTALL FINISH LINE, TAPE COURSE, ADD BANNERS
- 7:00AM DELIVER PORTABLE TOILETS, LIGHT TOWERS
- 12NOON EXPO LOAD IN – VENDORS, PRO-VIP TEAMS BEGINS
- 12NOON ONLINE REGISTRATION CLOSES BIKEREK.COM
- 1:00PM COURSE OPENS FOR PRE-RIDE INSPECTION
- 3:00PM CX SKILLS WITH THE PROS CLINIC AT PARK
- 5:00PM COURSE CLOSED AT DUSK - TEST LIGHTS
- 6PM-8PM CXLA HAPPY HOUR & DINNER

11/18 - SATURDAY CX MOVAL - DAY 1

- 8:30 AM RACE DAY REGISTRATION & PACKET PICK UP AVAILABLE
- 9:00 AM COURSE OPEN FOR WARM-UP-INSPECTION ALL CATEGORIES
- 9:00 AM RIDE CX.COM BEGINNER'S CLINIC
- 10:00 AM USAC RACING BEGINS (see separate schedule)
- 3:00 PM UCI CATEGORY RACING BEGINS (see separate schedule)
- 7:30 PM FINAL UCI AWARDS/WRAP DAY ONE

11.19 – SUNDAY CX MOVAL - DAY 2

- 6:30 AM RACE DAY REGISTRATION & PACKET PICK UP AVAILABLE
- 7:30 AM COURSE OPEN FOR WARM-UP-INSPECTION ALL CATEGORIES
- 8:00 AM USAC RACING BEGINS (see separate schedule)
- 12:30 PM UCI CATEGORY RACING BEGINS (see separate schedule)
- 5:00 PM FINAL UCI AWARDS/WRAP DAY TWO

UCI CX MoVal Weekend: March Field Park – Technical Guide



Held under USAC Permit #2017-3159.

All USAC Rules Apply - Entry fee includes \$3.75 USAC insurance plus a \$0.50 SCNCA surcharge.

A UCI or USA Cycling License is required. One Day License available on site.

SATURDAY, November 18th - Race Day Schedule

Start	Wave/Categories:	Duration	Prize List	EntryOnline-Race Day Race day entry+\$5 / Add'l Races+\$5 per after higher entry paid
8:30 AM	Expo Opens / Race Day Registration opens.			
9:00 AM	Course open for warm up and inspection. Beginner CX Clinic by RideCX.com			
*100 rider field limits for all waves per USAC rules				
10:00 AM	First Timer Men; First Timer Women	1 lap	Awards to ALL!	\$10
10:02 AM	Non-UCI Junior Boys 15-18; Junior Girls 15-18	30 min	Top 5 - Medals	\$15
10:03 AM	Junior Boys 9-14; Junior Girls 9-14	30 min	Top 5 - Medals	\$15
10:04 AM	Youth Boy and Girls 6-9	1 lap	Awards to ALL!	\$5
10:40 AM	Course open for warm up and inspection ONLY after the finish line and instructed by race official.			
11:00 AM	Masters Men 35+ B (CX 3-5)	40 min	Top 5 - Prizes	\$35-40
11:01 AM	Masters Men 45+ B: *CX 3-5)	40 min	Top 5 - Prizes	\$35-40
11:02 AM	Masters Women 35+ 45+ 55+ *Race together for cash purse, scored separately for Series.	40 min	Top 3 - \$100 combined Top 3 - Prizes/Cat	\$35-40
12:00 PM	Masters Men 55+; 65+ (CX 1-5)	40 min	Top 5 – Prizes	\$35-40
12:01 PM	Masters Men 35+ C Beginnnger (CX4-5)	40 min	Top 3 – Prizes	\$35-40
12:02 PM	Non-UCI Women A (CX1-5); Women B (CX3-5) *Race together scored separately. Women B score Series points. Women C (CX-4-5) Beginner	40 min	Top 3 - \$100 AB combined Top 5 - Prizes/Cat	\$35-40 \$30-35 (C)
12:55 PM	Masters Men 35+A (CX1-5)	45 min	Top 3 - \$100	\$35-40
12:56 PM	Masters Men 45+ A (CX 1-5)	45 min	Top 3 - \$100	\$35-40
12:57 PM	Non-UCI Men A (CX1-5); Men B (CX3-5) *Men B scored separately for Series points. No A/U23 Series Points.	45 min	Top 3 - \$100/AB combined Top 5 - Prizes/Cat	\$35-40
1:55 PM	Single Speed Men A (CX1-5); Single speed Men B (CX3-5)	40 min	Top 5 - Prizes/Cat	\$35-40
1:56 PM	Sngle Speed Men C; Single Speed Women: CX 1-5)	40 min	Top 5 - Prizes/Cat	\$35-40
1:57 PM	Collegiate Men (CX1-5); Collegiate Women (CX1-5)	40 min	Top 3 - Prizes/Cat	\$15-20
1:58 PM	Men C (CX4-5): Beginner	40 min	Top 5 - Prizes	\$30-35 (C)
2:40 PM	UCI Course open for inspection			
3:00 PM	UCI Junior Men 17-18	40 min	Top 15 - \$831	\$45
4:00 PM	UCI U23 Men	50 min	Top 20 - \$1,032	\$50
5:10 PM	UCI Elite Women p.b Knobbe Martens IP Law	40-50 min	Top 20 - \$1,580	\$55
6:30 PM	UCI Elite Men	60 min	Top 20 - \$1,580	\$55

UCI CX MoVal Weekend: March Field Park – Technical Guide



Held under USAC Permit #2017-3159.

All USAC Rules Apply - Entry fee includes \$3.75 USAC insurance plus a \$0.50 SCNCA surcharge.

A UCI or USA Cycling License is required. One Day License available on site.

SUNDAY, November 19th - Race Day Schedule

Start	Wave/Categories	Duration	Prizelist	Entry Fee Race day/Add'l Race+\$5 per after higher entry paid
6:30 AM	Expo Opens, Race Day Registration opens!			
7:00 AM	Course open for warm up and inspection - Beginner CX Clinic by RideCX.com			
*100 rider field limits for all waves per USAC rules				
8:00 AM	First Timer Men; First Timer Women	1 lap	Awards to ALL!	\$10
8:02 AM	Junior Boys 15-18; Junior Girls 15-18	30 min	Top 5 - Medals	\$15
8:03 AM	Junior Boys 9-14; Junior Girls 9-14	30 min	Top 5 - Medals	\$15
8:04 AM	Youth Boy and Girls 6-9	1 lap	Awards to ALL!	\$5
8:45 AM	Masters Men 35+ B (CX 3-5)	40 min	Top 5 - Prizes	\$35-\$40
8:46 AM	Masters Men 45+ B: *CX 3-5)	40 min	Top 5 - Prizes	\$35-\$40
8:47 AM	Masters Women 35+ 45+ 55+ *Race together scored separately.	40 min	Top 3 - \$100 combined Top 3 - Prizes/Cat	\$35-\$40
9:40 AM	Masters Men 55+; 65+ (CX 1-5)	40 min	Top 5 – Prizes/Cat	\$35-\$40
9:41 AM	Masters Men 35+ C Beginnger (CX4-5)	40 min	Top 3 – Prizes	\$35-\$40
9:42 AM	Non-UCI Women A (CX1-5); Women B (CX3-5) *Race together scored separately. Only Women B score Series points. Women C (CX-4-5) Beginner	40 min	Top 3 - \$100 AB combined Top 5 - Prizes/Cat	\$35-\$40 \$30-35 (C)
10:35 AM	Masters Men 35+A (CX1-5)	45 min	Top 3 - \$100	\$35-\$40
10:36 AM	Masters Men 45+ A (CX 1-5)	45 min	Top 3 - \$100	\$35-\$40
10:37 AM	Non-UCI Men A (CX1-5); Men B (CX3-5) *Men B scored separately for Series points. No A/U23 Series Points.	45 min	Top 3 - \$100/AB combined Top 5 - Prizes/Men B	\$35-\$40
11:35 AM	Single Speed Men A (CX1-5); Single speed Men B (CX3-5)	40 min	Top 5 - Prizes/Cat	\$35-\$40
11:36 AM	Sngle Speed Men C; Single Speed Women: CX 1-5)	40 min	Top 5 - Prizes/Cat	\$35-\$40
11:37 AM	Collegiate Men (CX1-5); Collegiate Women (CX1-5)	40 min	Top 3 - Prizes/Cat	\$15-\$20
11:38 AM	Men C (CX4-5): Beginner	40 min	Top 5 - Prizes	\$30-\$35 (C)
12:15 PM	UCI Course open for inspection.			
12:35 PM	UCI Junior Men 17-18	40 min	Top 15 - \$831	\$45
1:30 PM	UCI U23 Men	50 min	Top 20 - \$1,032	\$50
2:35 PM	UCI Elite Women p.b Knobbe Martens IP Law	40-50 min	Top 20 - \$1,580	\$55
3:40 PM	UCI Elite Men	60 min	Top 20 - \$1,580	\$55

UCI CX MoVal Weekend: March Field Park – Technical Guide

PART 5: UCI & SOCALCROSS DAILY CASH PAYOUT

Prize Money Scale:

- SoCalCross Prestige Series offers \$100 Top 3- per category daily cash purse for the follow categories:
Non-UCI Men/Women A/B combined, Masters Men 35+A, Men 45+A, Women Masters combined.
- UCI Race Prize money will be awarded per the UCI C2 race 2017-18 season as follows:

UCI (C2) DAILY CASH PAYOUT SCALE

Place	Elite Women	Elite Men	U23 Men	Junior Men 17-18
1	\$361	\$361	\$181	\$155
2	\$186	\$193	\$129	\$107
3	\$124	\$129	\$97	\$75
4	\$93	\$97	\$75	\$65
5	\$88	\$91	\$65	\$54
6	\$83	\$86	\$54	\$54
7	\$78	\$81	\$54	\$54
8	\$73	\$75	\$54	\$43
9	\$67	\$70	\$54	\$43
10	\$62	\$65	\$54	\$43
11	\$57	\$59	\$33	\$33
12	\$52	\$54	\$33	\$33
13	\$47	\$49	\$33	\$33
14	\$42	\$43	\$33	\$33
15	\$37	\$38	\$33	\$33
16	\$26	\$27	\$22	--
17	\$26	\$27	\$22	--
18	\$26	\$27	\$22	--
19	\$26	\$27	\$22	--
20	\$26	\$27	\$22	--
TOTALS:	\$1,580	\$1,580	\$1,032	\$831