



Mammoth **KAMIKAZE BIKE GAMES**

SEPT 14-17, 2017 | MAMMOTH LAKES, CA | KAMIKAZEBIKEGAMES.COM

USA CYCLING PRO GRT FINALS / UCI TECH GUIDE



PIKEBIKE

MOUNTAINBIKE



LUCAS OIL

Troy Lee Designs

TREK



GoPro



WELCOME TO MAMMOTH MOUNTAIN

On behalf of the Mammoth Mountain Community Foundation, Mammoth Mountain Ski Area, LLC and the Town of Mammoth Lakes, we are pleased to welcome you to the 2017 Kamikaze Bike Games Pro GRT/UCI Downhill. We wish you the best of luck and hope that you can enjoy our beautiful town and surroundings.

Lindsay Barksdale
Executive Director
Mammoth Mountain Community Foundation

Bill Cockroft
Event Director
Mammoth Mountain Ski Area, LLC

TABLE OF CONTENTS

| | |
|---------------------------------|----|
| TOWN OF MAMMOTH LAKES | 3 |
| MAMMOTH MOUNTAIN. | 3 |
| TOWN MAP | 4 |
| GETTING HERE | 5 |
| LODGING | 6 |
| DINING | 7 |
| EVENT SCHEDULE | 8 |
| CATEGORIES | 9 |
| PRO GRT MAP | 10 |
| VENUE MAP | 11 |
| REGISTRATION INFO. | 12 |
| PIT BIKE | 12 |
| EVENT STAFF | 12 |
| PRO AWARDS & PRIZES | 12 |
| PRO POINTS SYSTEM | 13 |
| RULES & REGULATIONS | 14 |



MAMMOTH LAKES

Welcome to Mammoth Lakes, where no adventure feels small. “Mammoth” is a fitting name for this region, as it accurately describes the size of our mountains, amount of lakes, expanse of the valleys, as well as the number of possibilities for exploration, recreation and family adventures. What really sets this place apart is its beauty, which creates a majestic backdrop, making even the smallest moments feel “Mammoth.”

The town of Mammoth Lakes sits high in the Sierra Nevada mountains, centrally located in the State of California. The town is only four square miles, but is surrounded by three million acres of wilderness, including several national parks and forests. At its center is Mammoth Mountain—considered one of North America’s finest year-round recreational areas. The Eastern Sierra boasts world-class hiking, fishing, and mountain biking, in addition to its winter recreation opportunities of downhill skiing, snowboarding, cross-country skiing and so much more.

To make your mountain stay as comfortable as possible, Mammoth offers an array of lodging options to suit your needs. From pitching a tent in the woods to full-on luxury with resort-style pampering services and amenities, Mammoth has it. There are also plenty of dining opportunities to please every palate. From The Village to Old Mammoth Road, Mammoth guests can choose from over 60 different restaurants or cafés featuring everything from classic American to your favorite international eats.

MAMMOTH MOUNTAIN

You’ll also find a full year-round calendar of top-notch events, festivals and competitions in Mammoth. With a scenic High Sierra backdrop and laid-back mountain vibe, it’s easy to see why Mammoth is a favorite destination that keeps guests returning year after year, season after season.

Here are a few useful websites to check out during your stay in Mammoth Lakes.



VisitMammoth.com
For further information about visiting the town of Mammoth Lakes, CA.

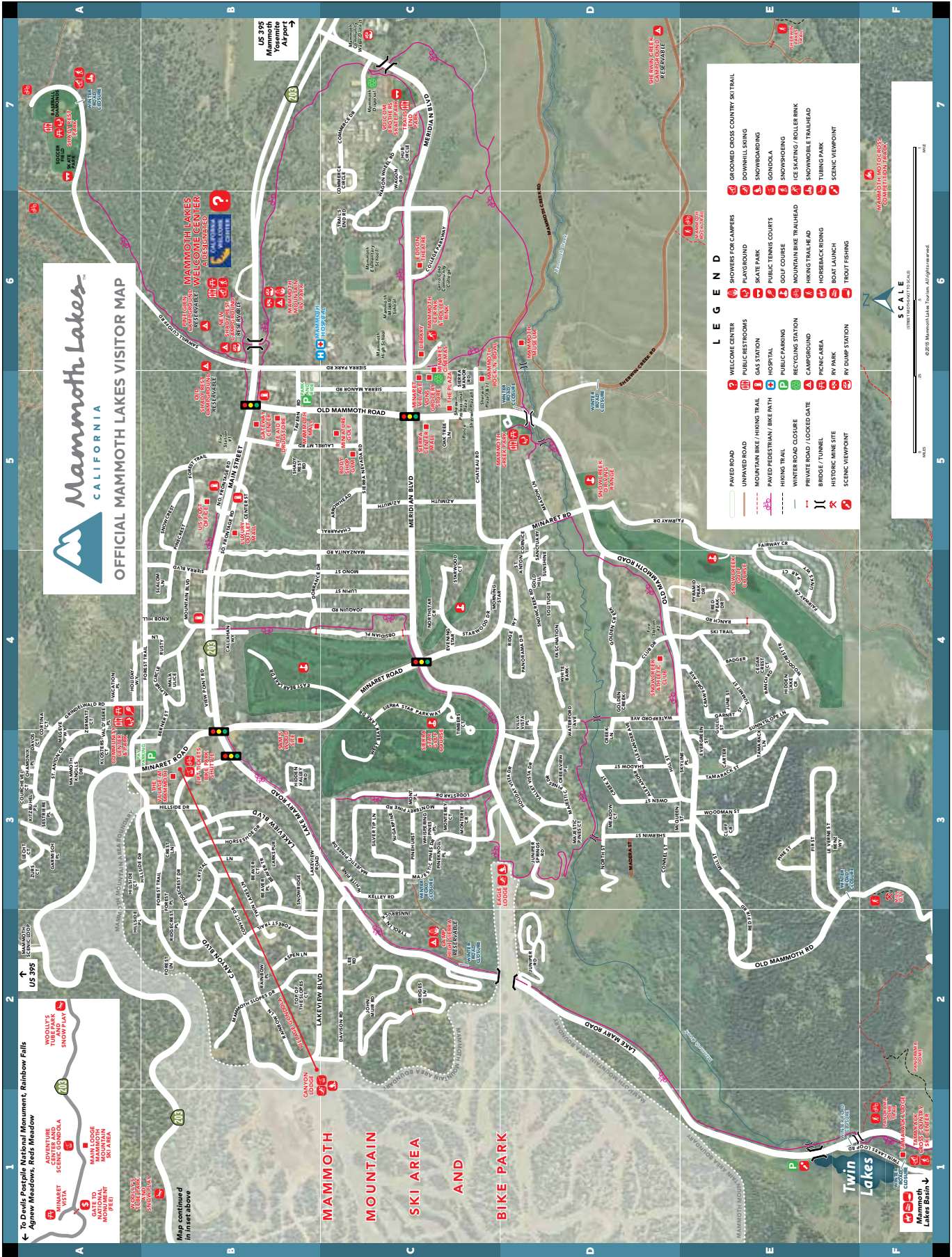


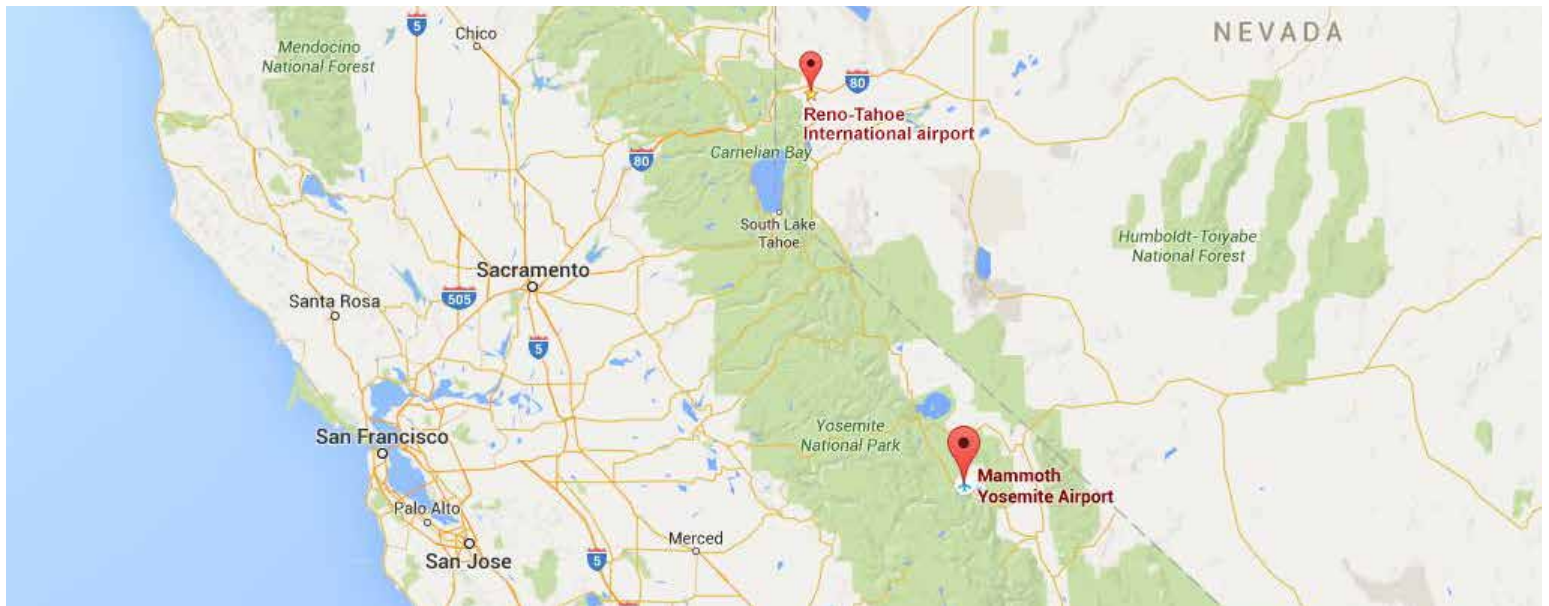
MammothMountain.com
For further information about Mammoth Mountain.



MammothFoundation.org
For further information about the Mammoth Mountain Community Foundation.

TOWN MAP





GETTING HERE

REGISTRATION HEADQUARTERS

Canyon Lodge

462 Rainbow Lane, Mammoth Lakes, CA 93546

BY AIR

Flights are available on Alaska Airlines daily with free transportation from the Mammoth Yosemite Airport into town if you are staying in a Mammoth Lodging Collection property. Book your flight by calling 800.MAMMOTH, 8AM–6PM.

MAMMOTH YOSEMITE AIRPORT (MMH)

1300 Airport Rd., Mammoth Lakes, CA 93546
9.8 miles – approximaely 18 minutes drive

RENO-TAHOE INTERNATIONAL AIRPORT (RNO)

2001 E Plumb Ln. Reno, NV 89502
166 miles – approximately 3 hours drive

BY CAR

The drive to Mammoth offers a spectacular tour of the Eastern Sierra. From the moment you hit the highway, you travel through one of the most beautiful portions of California. Valleys give way to mountains and energy builds until Mammoth Mountain looms in the distance. Access from all directions via the scenic north-to-south US Hwy 395, running along the eastern edge of California's Sierra Nevada range.

FROM SOUTHERN CALIFORNIA

You will pass Death Valley, Mount Whitney and the Ancient Bristlecone Pine Forest. Take I-5 north to State Route 14 north to US 395 north to State Route 203 (300–375 miles).

FROM NEVADA/LAKE TAHOE

Drive through miles of scenic backcountry, past Bodie State Historical Park and Mono Lake. Take US 395 south to State Route 203 (165 miles).

FROM SAN FRANCISCO

In the summertime, you'll arrive via Yosemite National Park (Hwy 120). In winter, take Interstate 80 north of Lake Tahoe to Hwy 50 to the Kingsbury Grade cutoff to US 395 south to State Route 203 (320 miles).

FROM LAS VEGAS

Tour the deserts interesting rock formations and old gold mining towns. One of several options is US 95 north to Hwy 266 west; turn slight left to State Route 168 to US 395 north to State Route 203 (310 miles).



LODGING

KAMIKAZE BIKE GAMES PACKAGE

Save 20% when you stay 2+ nights between September 13–18 at The Village Lodge, Juniper Springs Resort or Mammoth Mountain. Plus, each adult on the reservation will receive a commemorative Kamikaze t-shirt.

Starting at \$61 Per Person/Per Night

Book online now or call 800.MAMMOTH before rooms fill up.

THE MAMMOTH MOUNTAIN INN

Just steps away from the Mammoth Bike Park, Adventure Center, Reds Meadow shuttle, and Panorama Gondola, Mammoth Mountain Inn offers superior access to Mammoth's best mountainside activities and attractions.

THE VILLAGE LODGE

Located in the heart of The Village just steps away from the best shopping, dining, and entertainment in town, The Village Lodge is Mammoth's most popular all-access hotel.

JUNIPER SPRINGS RESORT

This resort delivers all the comforts of home in a family-friendly resort environment. With sun-filled decks, hot tubs and a heated pool, endless hiking and biking, and the majestic Sierra Star Golf Course at your doorstep, Juniper Springs Resort is the perfect base for any Mammoth adventure.

OTHER MAMMOTH LODGING PROPERTIES

TAMARACK LODGE

Tamarack Lodge provides the perfect mix of rustic charm and convenience with private cabins, and one of the finest restaurants in Mammoth.

CAMP HIGH SIERRA

This historic camp ground is nestled in rustic mountains surrounded by scenic areas providing a convenient base camp for photographs, hiking, swimming, fishing, backpacking, horseback riding and bicycling.

ADDITIONAL LODGING

1849 CONDOS

760.934.6501 • 1849Condos.com

Get 15% off when you stay two nights or more using promo code: Kami17.

ST. ANTON CONDOS

800.821.8761 • StAntonCondos.com

Get 15% off when you stay 3 nights or more using promo code: Kamikaze 2017.

MAMMOTH RESERVATIONS

MammothReservations.com

THE WESTIN MONACHE

760.934.0400 • WestinMammoth.com

SNOWCREEK RESORT

800.544.6007 • SnowCreekResort.com

BEST WESTERN HIGH SIERRA HOTEL

800.780.7234 • BestWestern.com

SEASONS FOUR

Season4.com

ALPENHOF LODGE

800.828.0371 • Alpenhof-Lodge.com

MAMMOTH PREMIER RESERVATIONS

800.336.6543 • MammothPremiere.com

THE SIERRA NEVADA RESORT & SPA

800.824.5132 • TheSierraNevadaResort.com



DINING IN THE VILLAGE AT MAMMOTH

53 KITCHEN & COCKTAILS

step inside to get a taste of mammoth spirit. Offering up a premium drink menu with house-infused and barrel-aged creations, and the 53 kitchen dishing out all your favorites, this local hangout is guaranteed to hit the spot.

CAMPO MAMMOTH

A favorite gathering place for dinner, happy hour, and date night with wood-fired Neapolitan pizzas, farm-fresh produce, handcrafted salumi and perfectly paired libations. Crafted by James Beard-nominated chef Mark Estee, the menu celebrates local, seasonal ingredients and simple cooking.

SUSHI REI

A vibrant setting and colorful menu featuring tasty starters, fresh sushi and noodle bowls make Sushi Rei your go-to for happy hour fun. Stop by this local hangout to sip creative cocktails or for an enjoyable dinner with family and friends.

STARBUCKS

Find your beloved coffeehouse in The Village and grab your favorite hot or cold coffee drink, espresso, tea or cocoa and a delicious quick bite for a hot and hassle-free breakfast or afternoon pick-me-up.

DINING AT CANYON LODGE

EDGE & WEDGE

Breakfast will be available daily on the third floor of Canyon Lodge, serving coffee, tea, juices, and more.

CANYON BEACH BBQ

Grab some lunch or an afternoon snack on the second floor slope-side deck of Canyon Lodge – featuring your favorite grill offerings and a wide selection of drinks and snacks.

CANYON BEACH BAR

Also on the slope-side, the Beach Bar is the favorite afternoon spot to grab a drink and watch the races. Enjoy a full selection of beer, wine, and alcohol.

EVENT SCHEDULE SUBJECT TO CHANGE



SCHEDULE KEY

Pro GRT Events

Race

Awards

| EVENT TIME | LIFT BOARD TIME | EVENT | LOCATION |
|------------|-----------------|-------|----------|
|------------|-----------------|-------|----------|

WEDNESDAY, SEPTEMBER 13

| | | | |
|-------|--|------------------------------|-------------------------|
| 4-7PM | | Registration/Package Pick-up | Canyon Lodge, 3RD floor |
|-------|--|------------------------------|-------------------------|

THURSDAY, SEPTEMBER 14

| | | | |
|----------------|----------------|---|--|
| 7AM-5PM | | Registration/Package Pick-Up | Canyon Lodge, 3RD floor |
| 7:30-11:30AM | 7:15-11:15AM | Beg/Sport Enduro Practice Expert/Pro Enduro Practice Kamikaze DH Practice (Invite Only) | Stage 4 Stage 5 Panorama Gondola |
| 9AM-5PM | | Expo Area Open | Canyon Lodge |
| 11:30AM-2:25PM | 11:15AM-2:15PM | Cat 2/3 DH Practice | Follow Me - Chair 16 |
| 1:30-2:30PM | 1:15-2:15PM | Walking Inspection Cat1/Pro | Bullet - Chair 16 |
| 2:35-5:30PM | 2:15-5:15PM | All Cat 1/Pro DH Practice | Bullet - Chair 16 |
| 3-5PM | | Cross Country Practice | Canyon Lodge |
| 5PM | | All On-Site DH Registration Closes | Canyon Lodge, 3RD floor |
| 5:30PM | | Rider Meeting | Canyon Lodge, 4TH floor |

FRIDAY, SEPTEMBER 15

| | | | |
|--------------|------------------|---|----------------------------|
| 7AM-5PM | | Registration/Package Pick-Up | Canyon Lodge, 3RD floor |
| 7:30-9AM | 7:15-8:45AM | Cat 2/3 DH Practice & Inspection | Follow Me - Chair 16 |
| 9AM-5PM | | Expo Area Open | |
| 9:30-10:30AM | 9:10AM Seed List | Cat 2/3 DH Race | Follow Me - Chair 16 |
| 11AM-2PM | 10:45AM-1:45PM | Beg/Sport Enduro Practice Expert/Pro Enduro Practice | Stage 4 Stage 5 |
| 11:30AM | | Cat 2/3 DH Awards | Awards Stage, Canyon Lodge |
| 1-2:45PM | | Cross Country Practice/Pre-Ride | Canyon Lodge |
| 2-3PM | 1:45-2:45PM | Kamikaze DH Practice (Invite Only) | Panorama Gondola |
| 2-3:30PM | 1:45-3:15PM | All Cat 1/Pro DH Practice & Inspection | Bullet - Chair 16 |
| 3PM | | Cross Country Race | Canyon Lodge |
| 3:30-4:30PM | 3:10PM | TLD Legends of the Kamikaze Race | Panorama Gondola |
| 4-5:30PM | 3:40PM Seed List | Cat 1 Juniors/Pro M/Pro W DH Qualification | Bullet - Chair 16 |
| 5:30PM | | Legends/Cross Country Awards | Awards Stage, Canyon Lodge |
| 5:45 PM | | Rider Meeting | Canyon Lodge, 4TH floor |

EVENT SCHEDULE, CONT'D SUBJECT TO CHANGE

SCHEDULE KEY

Pro GRT Events

Race

Awards

| EVENT TIME | LIFT BOARD TIME | EVENT | LOCATION |
|-------------------------------|--------------------------|---|--|
| SATURDAY, SEPTEMBER 16 | | | |
| 7AM – 5PM | | Registration/Package Pick-Up | Canyon Lodge, 3 RD floor |
| 7:30 – 9:30AM | 7:15 – 9:15AM | Beg/Sport Enduro Practice Expert/Pro Enduro Practice | Stage 4 Stage 5 |
| 9AM – 5PM | | Expo Area Open | Canyon Lodge |
| 9:30 – 10:30AM | 9:15 – 10:15AM | Cat 1/Pro M/Pro W Practice & Inspection | Bullet – Chair 16 |
| 11AM – 12:30PM | 10:40AM Seed List | Cat 1 DH Race | Bullet – Chair 16 |
| 11:30AM – 12:15PM | | Lucas Oil Kids Race Registration | Canyon Lodge |
| 1 – 2:30PM | 12:40PM Seed List | Pro GRT/UCI DH Cat 1 Jr/Pro M&W Race | Bullet – Chair 16 |
| 1 – 5PM | 1PM Seed List | Beg/Sport/Jr Enduro Race | Stage 3 |
| 12:30PM | | Lucas Oil Kids Race | Canyon Lodge |
| 1:30 – 2:30PM | | TLD Boogaloo Registration – Class 1 eMTB | Canyon Lodge |
| 2:30 – 3PM | | TLD Boogaloo Pre-Ride – Class 1 eMTB | Canyon Lodge |
| 3PM | | Cat 1 & Pro GRT/UCI DH Awards | Awards Stage, Canyon Lodge |
| 3:15 – 4:15PM | | TLD Boogaloo – Class 1 eMTB – Amateur Race | Canyon Lodge |
| 4:30 – 5:30PM | | TLD Boogaloo – Class 1 eMTB – Pro Race | Canyon Lodge |
| 5:30PM | | TLD Boogaloo & Beg/Sport/Jr Enduro Awards Rider Meeting | Awards Stage, Canyon Lodge Canyon Lodge, 4 TH floor |
| 6:30PM | | FREE Screening of Rebecca Rusch's <i>Blood Road</i> | The Village at Mammoth |

SUNDAY, SEPTEMBER 17

| | | | |
|---------------|-------------------------|------------------------------------|-------------------------------------|
| 7–8AM | | Registration/Package Pick-Up | Canyon Lodge, 3 RD floor |
| 7:30–9:15AM | 7:15–9AM | Expert/Pro Enduro Practice | Stage 5 |
| 9AM–3PM | | Expo Area Open | Canyon Lodge |
| 9:30AM | 9:10AM Seed List | Expert/Pro/Open Enduro Race | Stage 5 |
| 2:30PM | | Enduro Awards | Awards Stage, Canyon Lodge |

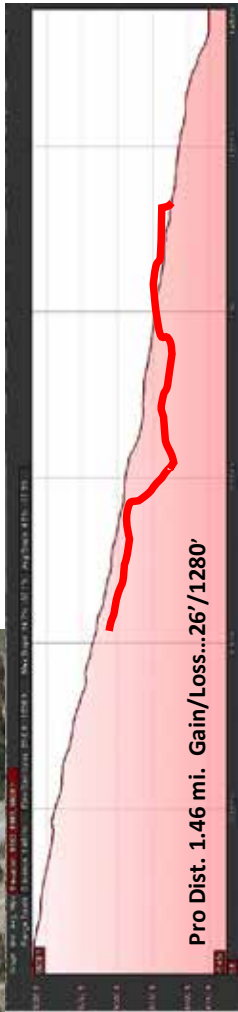
CATEGORIES

| PRO/CAT 1 | | CAT 2/3 | | |
|-----------------|------------------|-----------------|-----------------|--------------------|
| PRO MEN | PRO WOMEN | CAT 2 MEN | CAT 3 MEN | CAT 2 WOMEN |
| Cat 1 Men 9–18 | Cat 1 Women Open | Cat 2 Men 9–14 | Cat 3 Men 9–14 | Cat 2 Women 9–18 |
| Cat 1 Men 19–29 | | Cat 2 Men 15–18 | Cat 3 Men 15–18 | Cat 2 Women 19+ |
| Cat 1 Men 30–39 | | Cat 2 Men 19–29 | Cat 3 Men 19–39 | |
| Cat 1 Men 40+ | | Cat 2 Men 30–49 | Cat 3 Men 40–49 | CAT 3 WOMEN |
| | | Cat 2 Men 40–49 | Cat 3 Men 50+ | Cat 3 Women 9–18 |
| | | Cat 2 Men 50+ | | Cat 3 Women 19+ |

2017 PRO GRT MAP

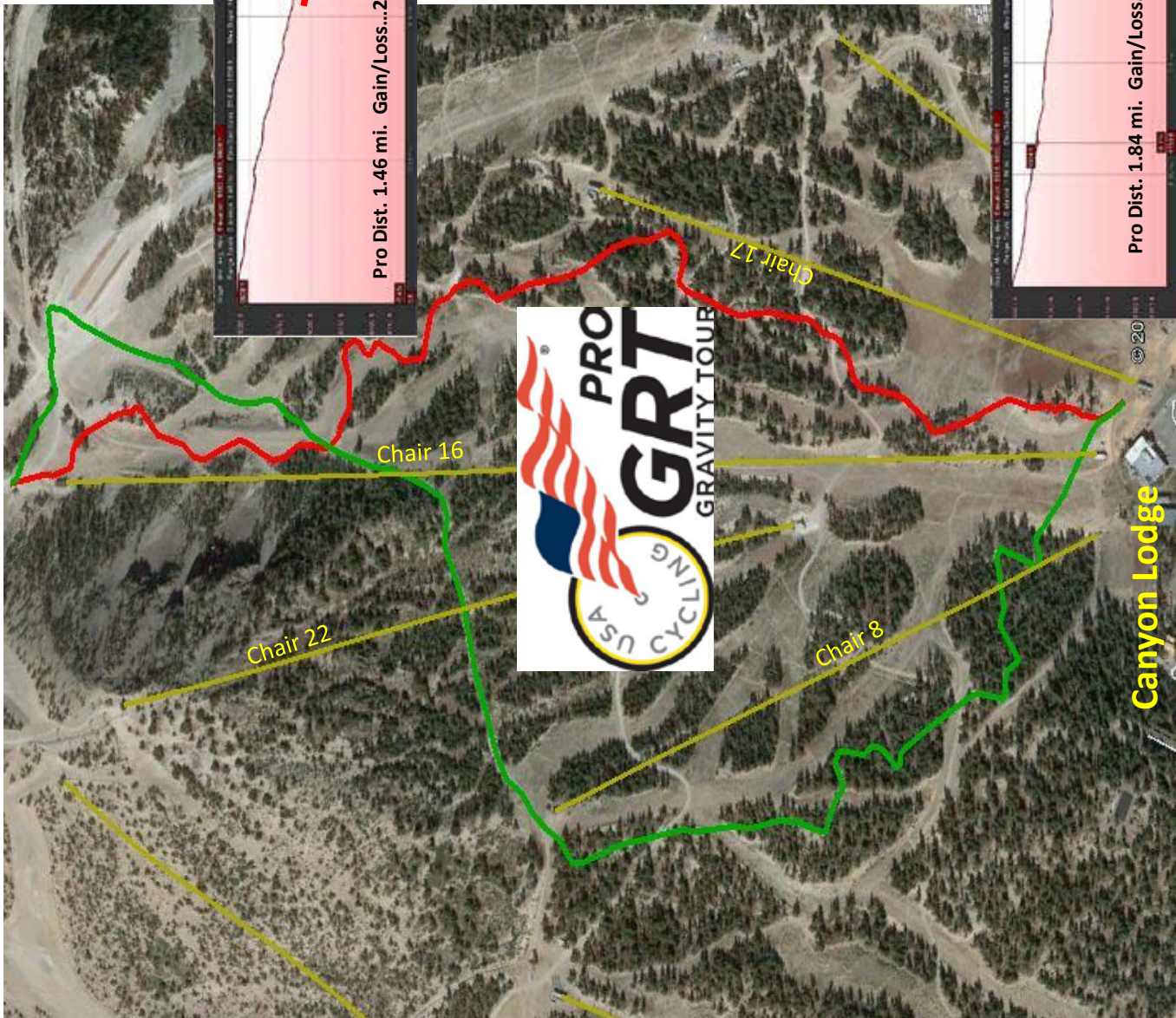
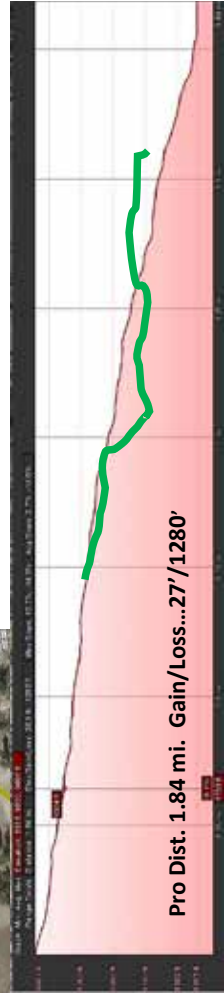


**ProGRT DH Course
"Bullet"**
Course Dist: 1.46 mi.
Elev Top: 9607'
Elev Bottom: 8354'



**Mammoth
KAMIKAZE
BIKE GAMES**
SEPT 14-17, 2017 | MAMMOTH LAKES, CA
KAMIKAZEBIKEGAMES.COM

**Amateur DH Course
"Follow Me"**
Course Dist: 1.84 mi.
Elev Top: 9607'
Elev Bottom: 8354'



REGISTRATION INFO

ONLINE

BikeReg.com/kamikaze-bike-games
Registration is available until
September 12 at 11:59PM PST

PRO

July 1–August 31 - \$70
September 1–12 - \$80

CAT 1/2/3

July 1–August 31 - \$60
September 1–12 - \$70

ON-SITE

Canyon Lodge, 3RD floor
Thursday, September 14 from 7AM–5PM
Cat 1, 2 and 3 – \$80 • Pro – \$90

PIT SPACE

Pit spaces are available. Please contact Caroline Casey at CCasey@MammothResorts.com or call 760.914.0301 for further information.

EVENT STAFF

USA CYCLING

UCI Chief Commissaire
Fred Seeman

Vice Chief
Jim Crompton (ejcrompton@aol.com)

Referee
Tim Burgess (timburg61@yahoo.com)

Finish Judge/Secretary
Lindsay Beth Currier

EVENT STAFF

Director – Bill Cockroft
Field of Play – Cliff Klock
Operations – Caroline Casey
Registration – Ananda Ybarra
Marketing – Michelle Tomaier
Expo – Sydney Jones
Media – Lauren Burke
Timing – Tom Spiegel
Medical Lead – Bobby Hoyt
Safety Coordinator – Cindy Dady
Volunteer Coordinator – Lindsay Barksdale

PRO AWARDS & PRIZES

Awards ceremonies will take place on the stage at Canyon Lodge. The top three riders in all categories will receive awards.

CAT 2/3

Saturday, September 16 • 3PM

PRO/CAT 1

Friday, September 15 • 11:30AM

PLACE PAYOUT (PRO MEN & WOMEN)

| | |
|---|-------|
| 1 | \$625 |
| 2 | \$350 |
| 3 | \$300 |
| 4 | \$150 |
| 5 | \$125 |
| 6 | \$110 |
| 7 | \$100 |
| 8 | \$85 |

POINTS SYSTEM

| POSITION | MEN POINTS | QUALIFYING (M) | WOMEN POINTS | QUALIFYING (W) |
|----------|------------|----------------|--------------|----------------|
| 1 | 100 | 25 | 100 | 25 |
| 2 | 80 | 20 | 80 | 20 |
| 3 | 70 | 17 | 65 | 17 |
| 4 | 63 | 14 | 50 | 14 |
| 5 | 56 | 11 | 40 | 11 |
| 6 | 47 | 9 | 30 | |
| 7 | 44 | 7 | 20 | |
| 8 | 41 | 5 | 15 | |
| 9 | 38 | 4 | 10 | |
| 10 | 36 | 3 | 5 | |
| 11 | 34 | | | |
| 12 | 32 | | | |
| 13 | 30 | | | |
| 14 | 28 | | | |
| 15 | 26 | | | |
| 16 | 25 | | | |
| 17 | 24 | | | |
| 18 | 23 | | | |
| 19 | 22 | | | |
| 20 | 21 | | | |
| 21 | 20 | | | |
| 22 | 19 | | | |
| 23 | 18 | | | |
| 24 | 17 | | | |
| 25 | 16 | | | |
| 26 | 15 | | | |
| 27 | 14 | | | |
| 28 | 13 | | | |
| 29 | 12 | | | |
| 30 | 11 | | | |
| 31 | 10 | | | |
| 32 | 9 | | | |
| 33 | 8 | | | |
| 34 | 7 | | | |
| 35 | 6 | | | |
| 36 | 5 | | | |
| 37 | 4 | | | |
| 38 | 3 | | | |
| 39 | 2 | | | |
| 40 | 1 | | | |

RULES & REGULATIONS

LICENSES

This is a UCI/USA Cycling sanctioned event. All participants must be licensed to participate in the event. Pro and Cat 1 riders must have an annual license, Cat 2/3 riders must have an annual or day license. Cat 1, Pro, and UCI licenses will not be sold on-site.

Day licenses can be purchased on-site at registration for \$10, or in advance online with USA Cycling at www.USACycling.org/buy-a-license.html

ORGANIZATION OF COMPETITION AND COURSE SPECIFICS

Kamikaze Bike Games Pro GRT #7 Elite categories shall be run under UCI regulations. Regulations available at www.UCI.ch/inside-uci/rules-and-regulations/regulations/. All other categories will follow USA Cycling Regulations found at www.USACycling.org

A single run format will be used with a qualifying run for Pro Men/Pro Women/Cat 1 Men 17–18. The qualifying run will take place on Friday, September 15 with 60 riders advancing to Saturday's final. The seeding run will determine the start order for the final. All other classes will have a single run race with the fastest rider declared the winner.

There will be two separate clearly marked courses for Pro/Cat 1 (Bullet) and Cat 2/3 (Follow Me). They will be clearly marked and appropriately technical based on category. Riders are only permitted to ride on the course for which they are registered and must display a valid race plate at all times.

It is STRONGLY encouraged to do a "course walk" prior to riding. Please refer to the schedule for walking inspection times. Course times will vary between 3 to 6 minutes approximately.

LIFT RULES

Race entry includes lift access on race day only and seeding runs (if applicable). Lift tickets are required for practice on non-race days. Lift tickets can be pre-purchased through BikeReg.com or available at event registration for \$25.

Spectators may purchase a lift ticket to ride Chair 16 for \$10. Spectators must walk down – no bikes allowed and no downloading on the lift. Spectators wishing to ride the Panorama Gondola may purchase a Scenic Gondola Ride ticket at the Adventure Center, located across from Main Lodge.

Coaches and mechanics may purchase lift tickets to ride Chair 16 for \$10 during event registration.

CODE OF CONDUCT

If you come upon a downed rider, you must alert a course marshal.

Riders must act in a sporting manner at all times and must allow faster riders to pass without obstructing the course.

If a rider exits the course for any reason, he/she must return to the course at the same point from which he/she exited. If the President of the Commissaires' Panel deems that the rider gained advantage, the rider is disqualified (DSQ).

Riders must respect the natural environment and not pollute the course or venue.

Anyone who is found to have altered the course will have his/her accreditation removed or, in case of a rider, will be disqualified (DSQ).

CLOTHING & ACCESSORIES

Any tight-fitting spandex/elastane-based clothing is not permitted.

A full-face helmet must be worn properly during racing and training on the course. The helmet must be fitted with a visor. Open-face helmets may not be worn.

The UCI strongly recommends that riders wear the following protection:

- back, elbow, knee and shoulder protectors made of rigid materials
- protection for the nape of the neck and the cervical vertebrae
- padding on shins and thighs
- broad full-length trousers made from rip-resistant material incorporating protection for the knees and calves, or broad-cut shorts made from rip-resistant material plus knee and calf protectors with a rigid surface
- long-sleeved shirt
- full-finger gloves

TIMING

A photocell-triggered timing system will be utilized that allows timing to the hundredth of a second. Racer's times will be posted as they complete their run. Most races will have 30-second intervals with short breaks between classes.