


# UCI Spooky Cross Weekend 2012: October 20-21st



## Event Summary

<b>Event</b>	Spooky Cross Weekend
<b>Date</b>	October 20-21 2012
<b>UCI Classification</b>	C2 / C2
<b>Start Time/Depart:</b>	SATURDAY - 12:00 PM first race; SUNDAY - 9:00 AM first race (see separate race day schedules)
<b>Venue Location:</b>	Fairplex in Pomona
<b>Registration:</b>	Fairplex Club Mezzanine Level 2
<b>Anti Doping:</b>	Location and Rider Numbers will be posted at Fairplex Club Mezzanine Level 2
<b>Official Race Hotel</b>	 <b>Sheraton Fairplex Hotel</b> 601 West McKinley Avenue Pomona, California 91768 USA Hotel Front Desk: (909) 622-2220
<b>Onsite RV Camping Accommodations:</b>	
	Fairplex KOA RV Park is the perfect escape to a safe and serene camping environment. Seated against the backdrop of the majestic San Gabriel Mountains, this popular, 12-acre vacation spot is available on a year-round basis.:
<b>Post Race Showers:</b>	<b>Sheraton Fairplex Hotel:</b> 601 West McKinley Avenue Pomona, California 91768 via Shuttle transport less than miles from race venue
<b>Emergency Hospital</b>	<b>Pomona Valley Hospital Medical Center</b> 1798 N. Garey Avenue - Pomona, CA 91767 - 909.865.9500
<b>Race &amp; Media HQ on site:</b>	Fairplex Grandstand – Ground Level
<b>Awards:</b>	Podium at Start/Finish - immediately following the event
<b>Post Event Press Conference:</b>	Immediately following the awards ceremony at awards podium

## PART 1: RULES & REGULATIONS

**Regulations:** The race shall be held under the 2012 USAC/UCI regulations: notably, safety, starting order, course guidelines, and duration of events.

### Participation:

**Categories:** The event will include UCI elite men and women categories as well as amateur categories and shall be organized in accordance with USAC and UCI regulations.

- UCI categories will include: Elite Men and Elite Women
- USAC categories will include: Youth U10, Juniors 10-14, 15-18, Master Men 35+ 1-4, 35+ 3/4, 45+ 1-4, 45+ 3/4, 55+ 1-4, Women 35+ 1-4, Women 45+ 1-4, Men 1-4, Men 3/4, Men 4, Women 1-4, Women 3/4, Women 4, Single Speed Men 1-4, Single Speed Men 3/4 and Single Speed Women 1-4

**Racing Age:** A rider's 2012-13 cyclocross racing age, according to UCI

*5.1.001 The category to which the license-holder belongs on 1 January of the civil year following will be used for his participation in events for the whole season.*

In other words, a rider's racing age for all categories is determined by his/her age on December 31, 2013.

**Race Headquarters & Press Room:** Race headquarters and Press Room will be located in the Fairplex Grandstand at the race venue. Wireless Internet will be provided.

**Anti-Doping:** All races are conducted under USA Cycling, UCI and USADA anti-doping regulations. Riders must check to see if they are required to submit to doping control. Doping Control will be located in the Fairplex Grandstand – 2<sup>nd</sup> Floor

### Start Order & Staging Protocol:

**UCI rule 5.1.043 – Elite:** *The start order will be determined by the order of latest published UCI cyclocross point classification from highest to lowest. Riders with 0 UCI points will receive start/bib number by random draw.*

**Bike Washing Area:** Spray washing will be available within the pit area as needed. With an auxiliary wash area (hose and spigot) will be set up for pre-post race clean-up in Parking Lot 7 nearest racer parking and the race venue.

**Pit Pass & Mechanic's Protocol:** Mechanics passes will be issued at Registration/Package Pick-up. No other personnel will be allowed in the pit zone.

**Awards Area:** Riders finishing in the top 5 of UCI categories shall report IMMEDIATELY to the podium waiting area. Only riders and staff are allowed in the podium waiting area. NO EXCEPTIONS. Mechanics must post bikes in the "winner's rack" within 5 minutes of the finish. Mechanics are to stay with the bikes until after their rider's press conference.

## **PART 1: RULES & REGULATIONS (cont'd)**

**Registration:** Pre-registration is available online at [www.UCI.com](http://www.UCI.com) and closes Thursday at 10/13 at 11:59 PM Pacific Time prior to the race weekend. Registration and packet pickup will be available at the event registration located at the Fairplex Grandstand 2<sup>nd</sup> Floor on Friday 10/19 from 3pm–6pm. Registration for UCI categories closes 1 hour prior to Elite Women's start (6:20 PM Saturday and 1:30 PM Sunday).

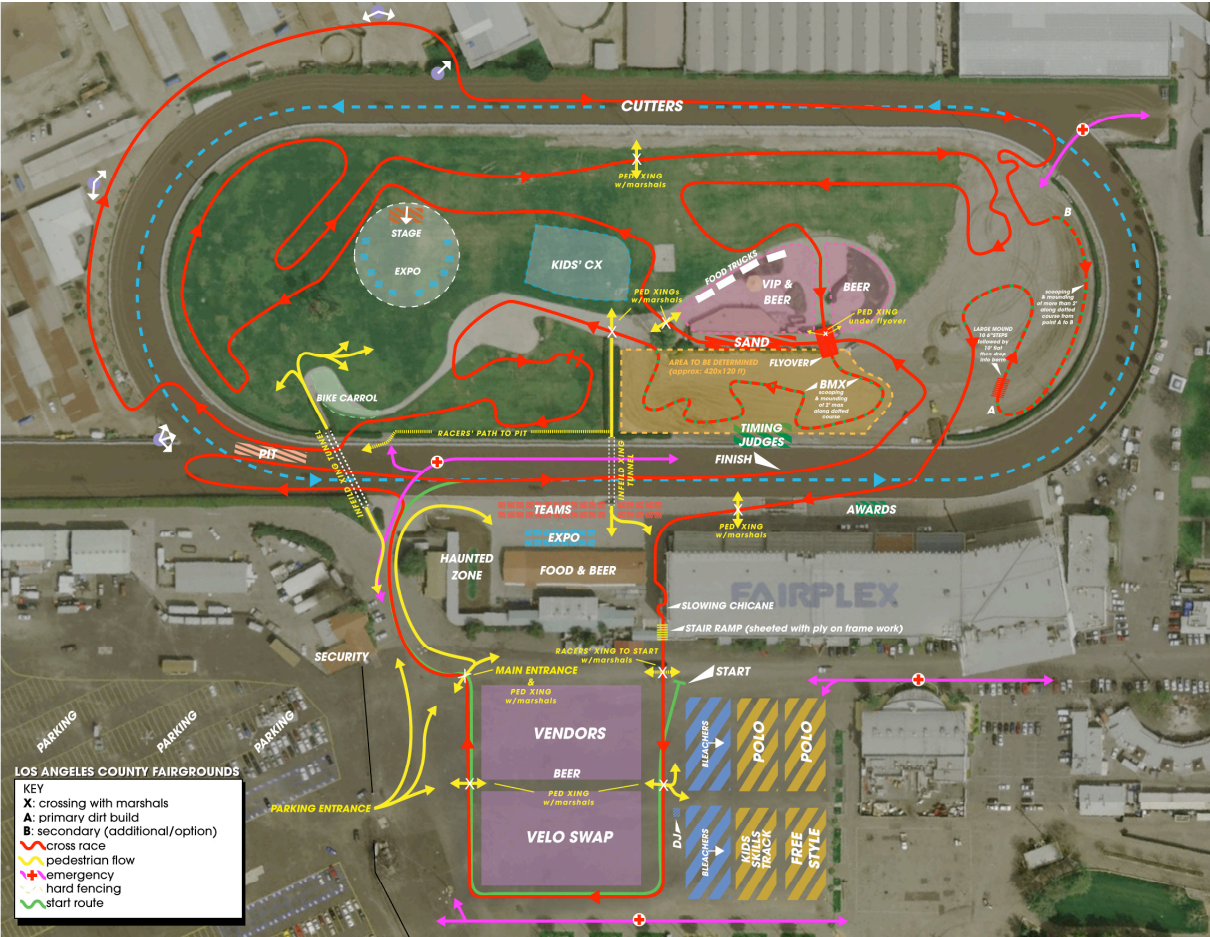
**Timing:** Spooky Cross will be using MyLaps timing chips. Racers should wear the chip on either ankle, using the strap provided. If a racer has their own MyLaps chip, they may provide the chip ID at registration and use it instead of a promoter-supplied chip. Please return timing chips immediately following the race to a chip return volunteer or race registration. Photo finish equipment will not be in use.

## **PART 2: COURSE DESCRIPTION & LAYOUT**

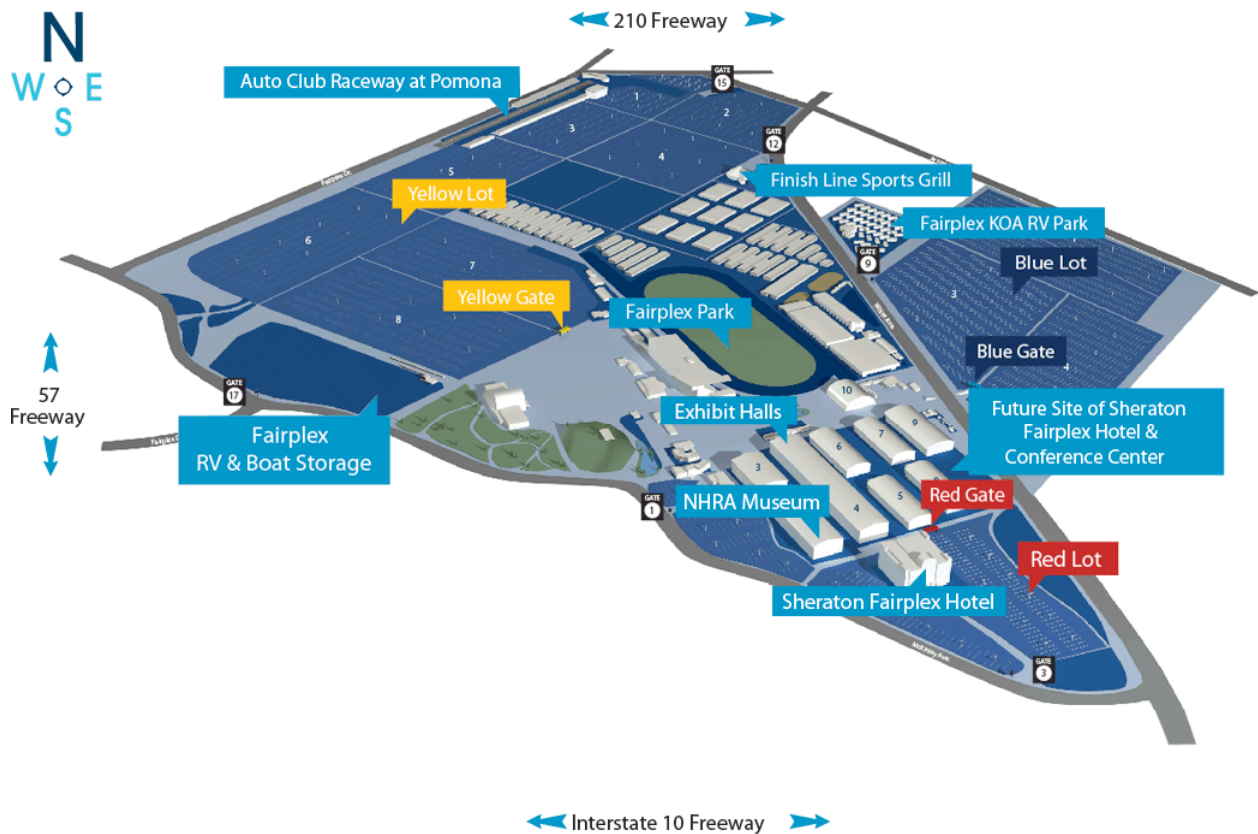
Spooky Cross has been Southern California's most popular race over the past four years and the course more than supports its popularity. It is a spectator friendly course that makes its way around the expo with barriers and start/finish right in the center of the action.

Course features: This 3.5km course is comprised of: 40% grass, 10% pavement, and 50% dirt. . This course starts on the dirt track then turning into the infield expo and to the first double barrier section. The course meanders through the race track and includes a cross over-under bridge, BMX style dirt whoops, steps and berm. There is one long sand section. There will be a double pit (2-way) location in the center of the course, splitting the midway points in each direction of the course. It will include a bike wash station for races in progress only. An auxiliary wash will be located nearest the track and racer parking lot 7.

UCI SPOOKY CROSS WEEKEND TECHNICAL GUIDE



**FAIRPLEX LAYOUT:** Fairplex Stadium and parking area 9 will be the location of the event. Enter at Gate 17 – general admission parking Area 7, VIP TEAM parking in area 9 available.



### **PART 3: PARK INFO, RACE DIRECTIONS & SCHEDULE:**

Fairplex is located in Pomona and is conveniently reached from all points in Southern California. Easily identifiable Fairplex signs are located throughout Pomona and neighboring communities to direct motorists. Directional signs are also prominent along nearby freeways.

**Address:** 1101 W. McKinley Ave., Pomona, CA 91768

**Phone :** (909) 623-3111 -- **email:** [info@fairplex.com](mailto:info@fairplex.com)

**Directions including airline, metro links can be found at:**

[http://www.fairplex.com/fp/aboutus/maps\\_directions.aspx](http://www.fairplex.com/fp/aboutus/maps_directions.aspx)

**Google Map Directions Link:** <http://goo.gl/maps/uzDHH>

**AIRPORT:** The closest airport is Ontario - 12 miles away. The host hotel Sheraton offers FREE shuttle service to and from. Other airports: LAX – 45 miles away Burbank – 40 miles away LONG BEACH – 36 miles away ORANGE COUNTY (SNA) – 34 miles away

#### **Plan your Trip by Bus or Rail:**

Visit Metro.net to plan your trip by bus or rail to Fairplex Or jump on the Metrolink Train and get off at the Pomona Metrolink Station. From there you can catch the Line 197 bus from the train station directly to the Fairgrounds.

#### **Event Schedule:**

# FRIDAY, OCTOBER 19, 2012: PRE-RIDE

## COURSE SET UP; PACKET PICK UP SCHEDULE

<b>2PM – 6PM</b>	Course open for warm up; Inspection
<b>4PM – 5PM</b>	CX Clinic at the Fairplex with the Pros
<b>5PM – 8PM</b>	Packet Pick Up (3pm-8p) and Happy Hour (6p-8P) : Meet the Pros at the Fairplex

# SATURDAY, OCTOBER 20, 2012: Spooky Cross

## RACE DAY SCHEDULE

Start	Wave/Categories	Duration	Prizelist	Pre-Reg Entry Price Race Day add \$5 2 <sup>nd</sup> Race add \$5 after higher entry paid except Juniors
10:00 AM	Race day registration opens			
11:00 AM	Course open for warm up and inspection			
100 rider field limits for all waves per USAC rules				
12:00 PM	First Timer Fun Race	1 lap	Top 3 – Medals	\$10 includes USAC one day license fee
12:01 PM	Youth Under 10	1 lap	Top 3 – Medals	\$10 includes USAC one day license fee
12:30 PM 12:32 PM	Junior Boys 15-18; Junior Girls 15-18 Junior Boys 10-14; Junior Girls 10-14	30 min	Top 3 – Medals	\$FREE add \$10 for USAC one Day or \$30 for annual license
1:15 PM	Kids and Canines Costume Cross Race			
1:30 PM	Masters Men 35+ B: CX 3/4	40 min	Top 3 - Prizes	\$30
1:31 PM	Masters Men 45+ B: CX 3/4	40 min	Top 3 - Prizes	\$30
1:33 PM	Masters Men 55+: CX 1-4	40 min	Top 3 - Prizes	\$30
2:30 PM	Men C: CX 4 Beginner 100 rider field limit	30 min	Top 5 – Prizes	\$20 add \$10 for USAC one Day or \$60 for annual license
3:15 PM	Non-UCI Men A: CX 1-4 No Prestige Series Points awarded	45 min	Top 3 - \$100	\$30
3:16 PM	Masters Men 35+ A: CX 1-4	45 min	Top 3 - \$100	\$30
3:17 PM	Masters Men 45+ A: CX 1-4	45 min	Top 3 - \$100	\$30
4:15PM	Men B: CX 3/4 100 rider field limit	45 min	Top 3 - Prizes	\$30
5:15 PM	Non-UCI Women A: CX 1-4	40 min	Top 3 – \$100	\$30
5:16 PM	Women B: CX 3/4: Masters Women 35+ *Race together; scored separately	40 min	Top 3 – Prizes each category	\$30
5:17 PM	Women C	40 min	Top 3 – Prizes	\$20 add \$10 for USAC one Day or \$60 for annual license
6:15 PM	Single Speed A: CX 1-4	40 min	Top 3 – Prizes	\$30
6:16 PM	Single Speed B: CX 3/4	40 min	Top 3 – Prizes	\$30
6:17 PM	Single Speed Women: CX 1-4	40 min	Top 3 – Prizes	\$30
7:00 PM	Spooky Cross Costume Night Race, Course open for UCI inspection and warmup			
7:30 PM	UCI Elite Women	40 min	Top 15 - \$1681	\$45
8:30 PM	UCI Elite Men	60 min	Top 25 - \$2068	\$45



# SUNDAY, OCTOBER 21, 2012: Krosstoberfest

## RACE SCHEDULE

Start	Wave/Categories	Duration	Prizelist	Pre-Reg Entry Race Day + \$5
7:00 AM	Expo opens, Race day registration opens			
8:00 AM	SQUARE ONE Obstacle Course Run			
8:00 AM	Beginners CX Clinic			
8:30 AM	Course open for warm up and inspection			
100 rider field limits for all waves per USAC rules				
9:00 AM	First Timer Fun Race	1 lap	Top 3 – Medals	\$10 includes USAC 1 day license fee
9:01 AM	Youth Under 10	1 lap	Top 3 – Medals	\$10 includes USAC 1 day license fee
9:30 AM 9:32 AM	Junior Boys 15-18; Junior Girls 15-18 Junior Boys 10-14; Junior Girls 10-14	30 min	Top 3 – Medals	\$FREE add \$10 for USAC 1 Day or \$30 for annual
10:15 AM	Masters Men 35+ B: CX 3/4	40 min	Top 3 - Prizes	\$30
10:16 AM	Masters Men 45+ B: CX 3/4	40 min	Top 3 - Prizes	\$30
10:17 AM	Masters Men 55+: CX 1-4	40 min	Top 3 - Prizes	\$30
11:15 AM	Men C: CX 4 Beginner	30 min	Top 5 – Prizes	\$20 add \$10 for USAC 1 Day or \$60 for annual
12:00 PM	Non-UCI Men A: CX 1-4 No Prestige Series Points awarded	45 min	Top 3 - \$100	\$30
12:01 PM	Masters Men 35+ A: CX 1-4; 45+ A	45 min	Top 3 - \$100	\$30
12:02 PM	Masters Men 45+ A: CX 1-4	45 min	Top 3 - \$100	\$30
12:03 PM	Men B: CX 3/4	45 min	Top 3 - Prizes	\$30
1:00 PM	Non-UCI Women A: CX 1-4	40 min	Top 3 – \$100	\$30
1:01 PM	Women B: CX 3/4: Masters Women 35+; *Race together; scored separately	40 min	Top 3 – Prizes each category	\$30
1:02 PM	Women C	40 min	Top 3 – Prizes	\$20 add \$10 for USAC 1 Day or \$60 for annual license
2:00 PM	Single Speed A: CX 1-4	40 min	Top 3 – Prizes	\$30
2:01 PM	Single Speed B: CX 3/4	40 min	Top 3 – Prizes	\$30
2:02 PM	Single Speed Women: CX 1-4	40 min	Top 3 – Prizes	\$30
2:40 PM	Young Riders Kiddie Cross Race (kids course) - Course open for inspection – UCI races			
3:00 PM	UCI Elite Women	40 min	Top 15 - \$1681	\$45
4:00 PM	UCI Elite Men	60 min	Top 25 - \$2068	\$45

**PART 4: UCI Elite Prize List**

UCI Classe 2						
Men				Women		
EUR	Converted to USD	Total USD Less 2% for CFAD	Total USD (Rounded Up/Down)	EUR	Converted to USD	Total USD (Rounded Up/Down)
350	454.37	\$445.28	\$445	185	\$240.17	\$240
179	232.38	\$227.73	\$228	130	\$168.77	\$169
118	153.19	\$150.12	\$150	100	\$129.82	\$130
94	122.03	\$119.59	\$120	80	\$103.86	\$104
86	111.65	\$109.41	\$109	70	\$90.87	\$91
82	106.45	\$104.32	\$104	60	\$77.89	\$78
76	98.66	\$96.69	\$97	60	\$77.89	\$78
70	90.87	\$89.06	\$89	60	\$77.89	\$78
67	86.98	\$85.24	\$85	60	\$77.89	\$78
64	83.08	\$81.42	\$81	60	\$77.89	\$78
60	77.89	\$76.33	\$76	30	\$38.95	\$39
48	62.31	\$61.07	\$61	30	\$38.95	\$39
45	58.42	\$57.25	\$57	30	\$38.95	\$39
38	49.33	\$48.34	\$48	30	\$38.95	\$39
26	33.75	\$33.08	\$33	30	\$38.95	\$39
22	28.56	\$27.99	\$28			
22	28.56	\$27.99	\$28			
22	28.56	\$27.99	\$28			
22	28.56	\$27.99	\$28			
22	28.56	\$27.99	\$28			
14	18.17	\$17.81	\$18			
14	18.17	\$17.81	\$18			
14	18.17	\$17.81	\$18			
14	18.17	\$17.81	\$18			
14	18.17	\$17.81	\$18			
1583	2055.05	\$2013.95	\$2013	1015	\$1317.67	\$1319